

PRINT MANAGEMENT FOR THE REAL WORLD

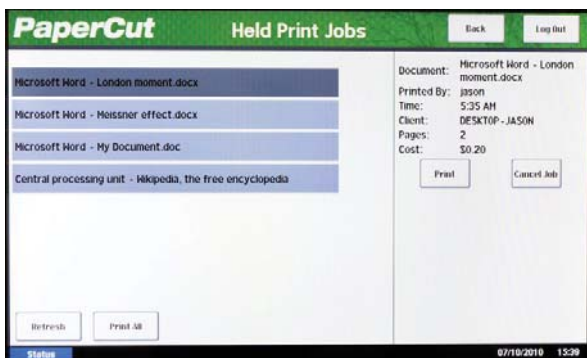
Managing your print fleet can be time consuming and an expensive overhead for IT resource. PaperCut MF is a practical, low-cost print management solution suitable for a wide range of purposes. PaperCut MF gives organisations total control of the print fleet, with IT managers able to overlay everything from performance monitoring and cost allocation to secure printing and strategic policy enforcement.

BUSINESS CHALLENGES

- > I do not know who is printing what in my business – Can I track all device and user activity?
- > I need to find ways to recover printing costs – How can I capture print and copy data and then recharge?
- > Managing devices and print queues is time consuming and lacks the ability to control user output – How can I improve device and output administration?
- > Most print solutions are costly and require a lot of administration - Can I find an easy to install and maintain solution?

YOUR ADVANTAGES WITH PaperCUT MF

- > Output Tracking: Track print, copy and scan activity company-wide for user and departmental
- > Cost recovery: Allocate document costs to a department/office, Set and enforce print/copy quotas to prevent output waste. Redirect print jobs to more cost-effective devices and create comprehensive management reports
- > Output management: Automatically capture all MFP activity and user data Gain mobility and convenience of Follow you whilst Optimising the use of devices with PaperCut's Rules and Routing
- > Administration: Centrally manage and get a complete view of your fleet – monitor all MFDs/ printers and users from a simple web interface. Wizard driven installation required minimal technical resource.



MANAGE YOUR FLEET EFFICIENTLY

PaperCut MF is a simple, low cost print management application that encourages responsible print behaviour, and helps reduce costs and environmental impact

FEATURES AND SPECIFICATIONS

PaperCut print management software is ideal for organizations of all sizes, from schools to engineering, graphic design, architectural, and accounting firms to advertising, legal and IT. PaperCut encourages the responsible use of company resources and helps to create an environmentally friendly workplace.

PaperCut MF is ideally suited to the education market as it helps to eliminate waste, encourages responsible print behaviour and makes users or departments accountable for their usage.

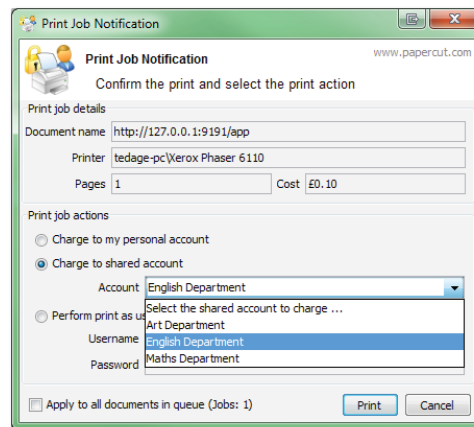
- > Control paper/toner costs - for every copy, print, scan and fax
- > Centrally manage and get a complete view of your fleet – monitor all MFDs/printers and users from a simple web interface
- > Report and Recover - costs by user, department, project, cost centre, device and function by creating charge-back accounts
- > Secure Access - via login, ID number or access card to keep sensitive documents confidential
- > Track and restrict usage through quotas or budgets
- > Enforce rules to regulate print policies and to cut down on print costs.
- > Web printing—easy printing from laptops and wireless devices. Ideal for student and public printing

SUGGESTED VERTICALS

- > Education
- > Legal
- > Local Government
- > Health

SYSTEM REQUIREMENTS

- > Windows operating system (OS) running on computer with at least a 2 GHz Processor – Windows Server 2003 or higher
- > Minimum 2 GB of RAM is necessary but 4 GB or greater is recommended
- > Minimum of 10 GB of hard disk space



KYOCERA Document Solutions (UK) Ltd
Eldon Court, 75-77 London Road, Reading RG1 5BS
www.kyoceradocumentsolutions.co.uk – info@duk.kyocera.com

* KYOCERA Document Solutions does not warrant that any specifications mentioned will be error-free. Specifications are subject to change without notice. Information is correct at time of going to press. All other brand and product names may be registered trademarks or trademarks of their respective holders and are hereby acknowledged.

YOUR KYOCERA BUSINESS PARTNER