



KONICA MINOLTA

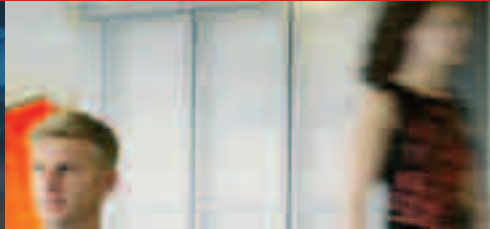
**Office System** Konica Minolta 130f



# Konica Minolta 130f

The Heart of Your Office

The essentials of imaging



### **The Heart of Your Office**

The Konica Minolta 130f is the innovative and efficient multifunctional device designed by professionals for professionals.

We made the Konica Minolta 130f with small offices and workgroups in mind. If you are looking for a wide range of imaging services without purchasing a wide range of office products, then the Konica Minolta 130f is the answer to your needs. Its many features are combined in one compact versatile and price conscious unit.



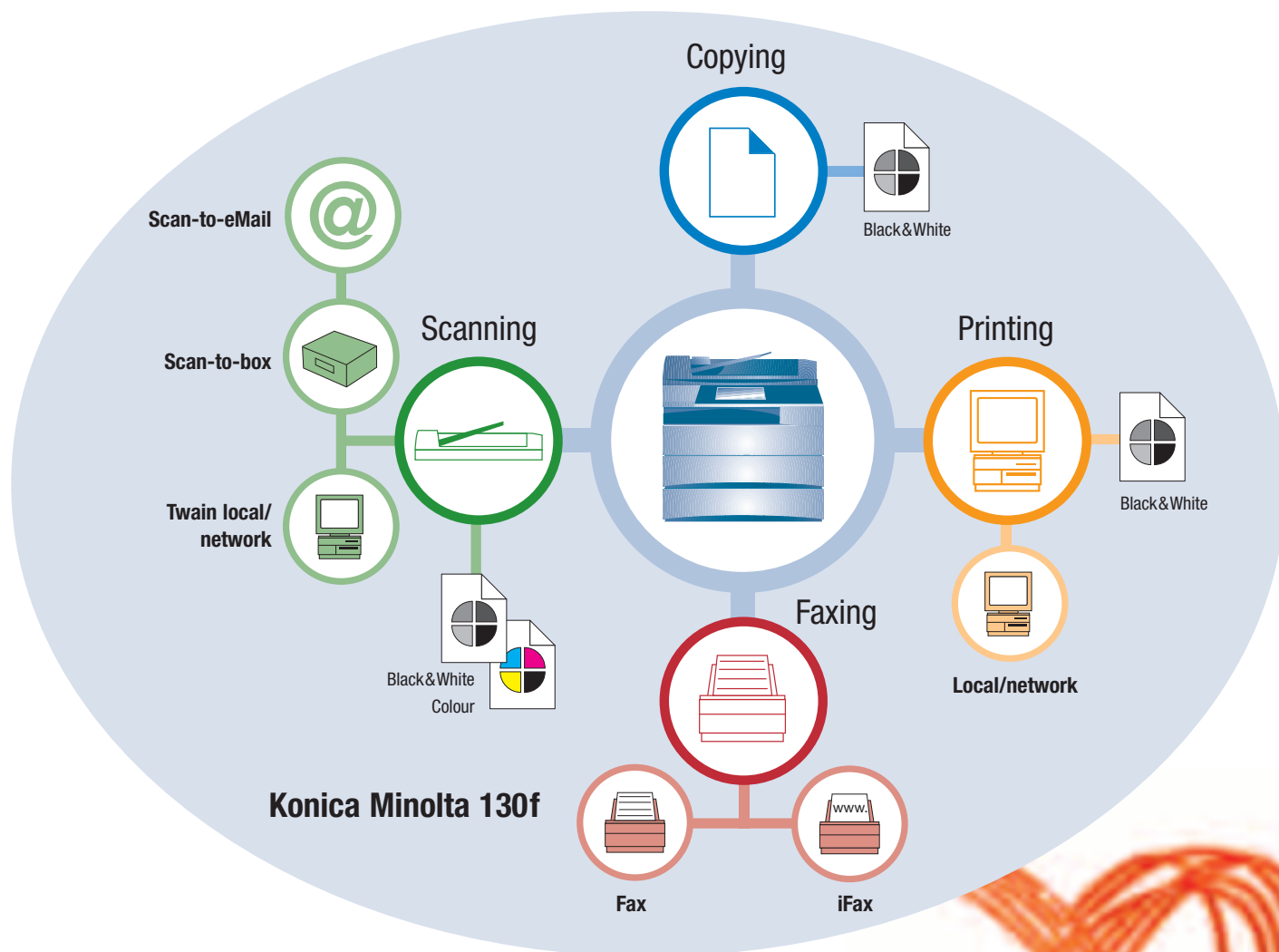
### **Information Circulation**

The multifunctional Konica Minolta 130f gets to the heart of your imaging and communication needs:

Copy, print, scan, fax, iFax and scan-to-eMail. Its high-speed fax modem, 40 one-touch keys and 8 MB memory make the Konica Minolta 130f a fast and efficient office tool. Your images are just a heartbeat away from any global destination.

# Innovation from the Heart





## ➔ The Heart of the Matter

The Konica Minolta 130f is built with proficiency and price consciousness in mind. It contains pioneering features and produces the quality copies our customers are used to.

New technologies provide for even higher efficiency and lower operating costs. For example:

- Our innovative Polymerized Toner means lower toner consumption, higher savings and better printing results.
- Fast fax transmissions reduce your telephone costs.
- iFax means no telephone charges at all.
- LED technology reduces noise in your office environment.
- The scan-to-box archives your documents, providing comfortable and timesaving handling and makes sharing of information easy via your network.
- Department codes make accounting more manageable.

And it's built to last.



Konica Minolta has its customers' interests at heart. The new 130f is an imaging system that increases efficiency and improves information circulation inside and outside your office. Thanks to new technologies and new ideas, we can offer new solutions to your imaging needs.

Konica Minolta gets to the heart of the matter.



KONICA MINOLTA

## Technical specifications

### Copier specifications

**Copy speed A4**

Up to 13 copies/min.

**Copy resolution**

Max. 600 x 600 dpi

**1st copy**

12 sec. (A4 crosswise)

**Gradations**

256 gradations

**Magnification**

25% - 400% in 1% steps via original glass

**Multiple copy**

1-99, countdown

**Copy memory**

Standard: 8 MB (650 pages)

Max.: 40 MB (3,370 pages)

**Copy features**

APS, AMS, auto cassette switching, job memory, electronic sorting, combine 2in1, department control

### Printer specifications

**(GDI standard)****Print speed A4**

Up to 13 prints/min.

**Print resolution**

Max. 600 x 600 dpi

**Interface**

USB 2.0

Parallel (IEEE1284)-optional

Ethernet (10/100Base-TX)-optional

**Print memory**

Standard: 8 MB

Max.: 40 MB

**Operating system**

Windows 95/98/SE/Me/2000/XP/NT4.0

### Printer specifications (PCL optional)

**Print speed A4**

Up to 13 prints/min.

**Print resolution**

Max. 600 x 600 dpi

**Page description language**

PCL 5e, PCL 6

**Interface**

USB 2.0

Parallel (IEEE1284)-optional

Ethernet (10/100Base-TX)-optional

**Print memory**

Standard: 8 MB

Max.: 40 MB

**Operating system**

Windows 95/98/SE/Me/2000/XP/NT4.0

**Print features**

Transmit once, print many

RIP once, print many

Watermark

Layout (2-up, 4-up, 8-up)

### Fax specifications

**Fax transmission time**

Less than 2 seconds (ITU no. 1)

**Fax modem speed**

Max. 33.6 kbps

**Coding**

MH, MR, MMR, JBIG

**Fax memory**

Shared with copier memory

**Fax features**

iFax, delayed transmission, broadcasting,

polling, memory receiving

### Scanner specifications

**Scan speed**

Up to 15 scans/min.

**Scan resolution**

Max. 600 x 600 dpi

**Scan modes**

TWAIN scan

Scan-to-box

Scan-to-eMail

Scan-to-iFax

**Scan features**

Colour scanning

### System specifications

**Automatic document feeder**

Max. 80 sheets (75 g/m<sup>2</sup>)

**Output paper size**

A6 to A4

**Paper weight**

60-120 g/m<sup>2</sup>

**Paper input capacity**

Standard: 550 sheets

Max.: 1,050 sheets

**Sheet bypass**

Multi-bypass tray (max. 50 sheets)

**Output capacity**

Max. 250 sheets

**Finishing modes**

Electronic Sorting

**Warm-up time**

Less than 23 sec.

**System dimensions (WxDxH, mm)**

520 x 450 x 446

**System weight**

Approx. 20.8 kg



All specifications relating to paper capacity refer to A4-sized paper of 80 g/m<sup>2</sup> quality.

All specifications relating to scanning, copying or printing speeds refer to A4-sized paper that is scanned, copied or printed crosswise in multipage, simplex mode.

The memory capacities listed refer to A4-sized paper with the toner coverage detailed in the respective foot note.

Some of the product illustrations contain optional accessories.

Konica Minolta does not warrant that any prices or specifications mentioned will be error-free.

Specifications are subject to change without notice.

All brand and product names may be registered trademarks or trademarks of their respective holders and are hereby acknowledged.

Printed in UK.

Your Konica Minolta Business Solutions Partner:

**Konica Minolta  
Business Solutions (UK) Ltd**

**Direct Operations**

Miles Gray Road, Basildon,

Essex, SS14 3AR

Tel: 0800 833864

Fax: 01268 282480

E-mail: [info@bs.konicaminolta.co.uk](mailto:info@bs.konicaminolta.co.uk)

[www.konicaminolta.co.uk](http://www.konicaminolta.co.uk)